

Patchwork Pieces

Valley Quilters Guild Newsletter

March 2010

Scraps from the President:

One thing you can say about Alaska, blink and the weather will change again and again. For a while we had semi-warm weather, and then, no sooner do we get accustomed to that, here comes blowing snow. I know the groundhog says six more weeks of winter weather, but I think I am about ready for spring.

I hope everyone enjoyed the games we played at the February meeting. I did!! We may just have to do that again sometime. In March, our program will be a trunk show presented by Heather Griffin. Heather has been quilting a long time and has some really great quilts to share with us.

We are kicking off our food drive at the March meeting. Please bring non-perishable food items to the depot. We will have a drop off box in the foyer of the depot. Thanks for your help with this.

We are still looking for a full-time Hospitality Hostess. Sue Peterson did a great job at the February meeting and Agnes Lee has offered to take March and April. Elaine Fergen will be in charge of the May meeting. If someone would like to help with the other six months, just let us know.

The Raffle committee will soon have the kits ready for next year's quilt. See Elaine to sign up and take a block home to make. Profits from the sale of our raffle quilt go to Education to help support classes and teachers.

I would like to take a moment and recognize Kathy Buirge, secretary, and Diana Fraley, treasurer, for all their hard work. Diana is the treasurer for the guild and I think she does a great job. Coming from a banking background, her knowledge has helped her keep everything up to date and available for anyone to see. Although Kathy may be leaving sometime this year or next, she still fulfills her duties and keeps all the minutes up to date and ready for the newsletter. She also co-shares duties for quilt camp. I am sure until Kathy leaves, she will do her job to her best ability. Over the next few months, I will be recognizing other members of the guild. If you have someone you want to recognize, let me know.

Thank you and keep quilting,

Mary Thompson, President



Upcoming Events

March

- 4 General Membership meeting
7 p.m. (social time begins at 6:30p.m.) at Palmer Depot
Program: Food Drive & Trunk show by Heather Griffin.
- 13 Open Sew at Palmer Depot
Board Meeting (9:00 a.m.)
[Newsletter Deadline](#)

April

- 1 General Membership meeting
7 p.m. (social time begins at 6:30p.m.) at Palmer Depot
Program: Education
- 10 Open Sew at Palmer Depot
Board Meeting (9:00 a.m.)
[Newsletter Deadline](#)

May

- 6 General Membership meeting
7 p.m. (social time begins at 6:30p.m.) at Palmer Depot
Program: Elaine
- 15 Open Sew at Palmer Depot
Board Meeting (9:00 a.m.)
[Newsletter Deadline](#)

June

- 3 General Membership meeting
7 p.m. (social time begins at 6:30p.m.) at Palmer Depot
Program: Sewing Machine Maintenance
- 5 Open Sew at Palmer Depot
Board Meeting (9:00 a.m.)
[Newsletter Deadline](#)



Valley Quilters Guild Meeting, Thursday, February 4, 2010, at Palmer Depot

President, Mary Thompson, called the meeting to order at 7:01 p.m., with 84 members and 4 guests present. Those with February birthdays were asked to stand and be recognized.

A quilt, made by retreat members in 2003, was shown. It is for sale to the highest bidder. There was a bid of \$200, but any higher bid obtained by the end of the meeting will win the quilt.

Janie Odgers, representing the Alaska Fiber Festival, presented information about the event. Details are available on their website: www.alaskafiberfestival.org

Minutes: Corrections to the January minutes were as follows: Kathy Buirge was absent from the January meeting (not Ruth Simpson) and will be installed as secretary in February; Meg Hills is co-chair of the Service committee with Judy Foster. Sue Peterson made a motion to accept the minutes, as corrected, Elaine Fergen seconded the motion and it passed.

Education Minute: Kathy Buirge handed out instructions for making thumb pin cushions and explained making yo-yos.

Education: Ann Buzby reported upcoming classes: Feb. 13 Deb Hardman will teach embellishments; March 13, Marcia Harlamert will teach It's a Nine-Patch; April 10 Kathy Buirge will teach Star Spin. The next education committee meeting will be Feb. 18 at MTA in Palmer. Please arrive by 6:30, as the doors are locked then. Ann gave a report on the next block, Geometry. It is done is bright batiks.

Service/Library: Librarian, Shirley Twitchell, showed some of the new library books. She was joined by Meg Hills and Judy Foster, co-chairs of the service committee, to show just a small sampling of the service fabric that is available. Members are invited to use service fabric and library books to make quilts for service. The fabric will be available during Open Sew days from 10 – 5.

Fund Raiser: Alice Sims reported that quilts that you want photographed for the calendar can be brought to open sew, beginning in March. Norm Crosby will take the pictures. Alice encourage pre-payments to help fund this project. You can begin ordering and pre-paying for the calendars at the March meeting. Calendars will sell for \$15. Please make sure the quilts are original public domain blocks, and they have hanging sleeves.

Retreat: Lynn Gronlund announced that massages will be available during retreat, for \$1.00 per minute. Elaine Fergen reported that there are still ten spaces available for the retreat. The theme is Vegas Night. Packets were available for those who paid in full. Those attending were encouraged to make up to three unfinished “bingo cards” to use during retreat. Don't quilt and finished the blocks, as they will be donated to service after retreat. Directions are in the packets.

Raffle Quilt: Elaine Fergen reported that the raffle quilt is quilted and will soon have the binding on it. It will then go to Lynn Gronlund for photography and to get tickets printed. The 2011 raffle quilt kits are being made by committee members during open sew on Feb. 13. Members are asked to make the background blocks; the appliqué will be done by committee members to keep track of the copyrighted material. Those who make the background blocks will have at least a month to complete them.

Hospitality: There is still no committee for hospitality, but Elaine Fergen is managing the sign-up sheets for bringing refreshments. Please consider signing up for this important committee. Elaine reported that there is still a need for additional people to bring food for the upcoming months.

DMV: Lisa Humphreys returned some of the breast cancer quilts and asked for “naughty” and star quilts to be displayed for the next two months.

Unfinished Business: Alice Sims asked who to contact about the website, in order to have it updated. She will contact Linda Conover.

New Business:

Announcements: There will not be a board meeting during Open Sew, since the president and treasurer will be out of town. Open Sew is February 13, 10:00, at the Palmer Depot.

Kathy Buirge was installed as secretary.

BREAK:

Mary read a “right and left” story as members passed small gifts right and left. The person who ended up with the gift at the end of the story kept the gift.

Drawings:

Basket—from Just Sew: Teri Hennemann

Guest: Kay Shively

Blocks- Peggy Benson

Block of the Month kit- Patty Livingston

Fat Quarters: Donna George, Lynne Wince, Teri Hennemann, Fran Rodabaugh

Members door prizes donated by Tami Quier: Debby Hudson, Mary Thompson, Lois Munford, Joan Graham, Lynn Gronlund

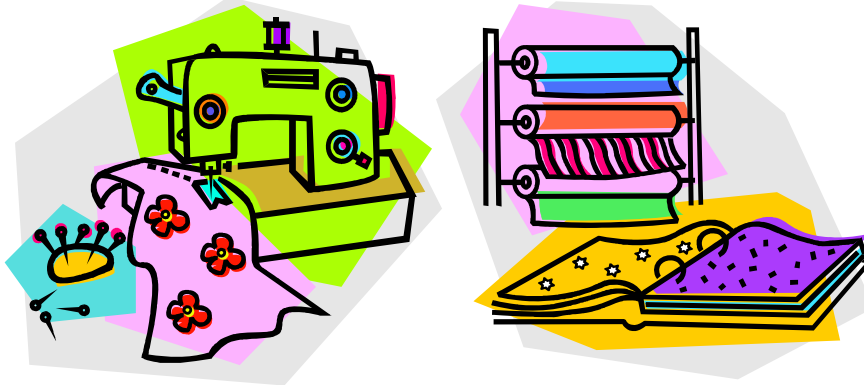
Lisa Humphreys won the retreat quilt for a bid of \$300.

Respectfully submitted,

Kathy Buirge, Secretary

You know you are a Quilter if.....

There's more Fabric in the House than Food
"Fat Quarters" are not the heaviest part of your body
Your ironing board is always set up but you never iron clothes
You think of your job as an interruption of your quilting time
You pet Fabric
People are always picking threads off you
You can measure a scant 1/4 by eye
"Featherweight" Doesn't mean Boxer
Your "UFO's" are not from outer space
You clean up your sewing room & they think you are leaving





TREASURER'S REPORT

For the Month of: January-10

Beginning Balance, Checking: \$ 862.03

INCOME:

Dues	485.00
Classes	-
Retreat	2,005.00
Quilt Camp	-
Auctions	-
Merchandise	50.00
Misc.	28.00
MVFCU Interest	0.33

Misc. Includes:	
name tags	8.00
Fons & Porter	-
ads & table rentals	20.00
NSF check & fee	-

TOTAL INCOME: \$ 2,568.33

EXPENSES:

Operating	226.00
Newsletter	133.25
Retreat Refunds	125.00
Quilt Camp	-
Rent	-
Hospitality	-
Service	2.88
Fundraisers:	-
Auctions	-
Fair Booth	-
Misc.	-
Transfer to Savings	

Operating Includes:	
	-
storage unit	126.00
cleaning depot	100.00
	-
	-
Misc. Includes:	
Fons & Porter	-

TOTAL EXPENSES: \$ 487.13

Ending Balance Checking \$ 2,943.23

SAVINGS:

Beginning Balance:	\$ 2,684.23
Deposits	-
Withdrawals	-
MVFCU Interest	-
Ending Balance	\$ 2,684.23

GAMING ACCT BALANCE: \$ 2,407.77

Presented By: _____
Diana Fraley - Treasurer

If you wish to reserve a table for an meeting please call me to make arrangements. There are several openings for table rentals throughout 2010 for \$10.00 per table per meeting: only 3 tables may be rented each month. No tables are rented in May, October, or December due to guild functions. You must contact me to reserve tables and must pay at the meeting or in advance.

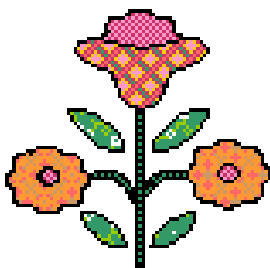
If you'd like to place an ad in the newsletter. The prices are \$5.00 one line/ \$10.00 1/4 page/ \$15.00 1/2 page/ \$20.00 full page. You need to pay the Treasurer, and then get your copy and proof of payment, and ad as is, to Tami Quier before the deadline. The ideal time to accomplish this is at the general meeting each month. Diana Fraley (907) 232-7415 or 745-2500 / dianakf@mtaonline.net (VQG Treasurer.)



2010 Classes

Classes scheduled for 2010 are listed below. You may register and pay for classes at the monthly meetings. Unless an instructor has limited the size of the class, all classes are limited to 20 students. Registration for classes is open for the three months prior to the class date. Don't wait to sign up or you may find that the class that is full. Registration fee is \$10.00 for teachers who are members of the Guild and \$40.00 for visiting teachers. All classes begin at 10:30 a.m.

January	9	Star Spin	Kathy Buirge
February	13	Over the Top Embellishments	Deb Hardman*
March	13	It's a Nine Patch (X-block)	Marcia Harlamert
April	10	Star Spin	Kathy Buirge
May	15	Woven Background	Mary Thompson
June	5	Open Sew for Service	
July	17	BB Bag	Marlene Fuller
October	9	Crazy Quilt	Joanna Stokinger
November	13	Brazilian Embroidery	Ellen Godfrey



Secret Pals

Don't forget to pick up your gift if you participated in drawing names last meeting,

SERVICE

Thank you to everyone who has generously donated batting, zippers, Velcro and webbing to the Service Committee. We use the zippers, velcro, and webbing to make wheelchair, walker, catheter, and personal care bags for the Pioneer Home and Senior Centers. We can always use more.

DMV QUILTS

For April - June I would like to hang Western Themed Quilts. Thank you, contact Lisa Humphreys 376-7987

Classes:

Are Looking for a fun way to spend a Saturday? Come sign up for a class. In March, Marcia Harlamert is teaching a new way to look at a nine patch with her X Block class. Kathy Buirge's Star Spin class has been rescheduled for April. There is still room if you could not make it in January. In May. Mary Thompson will teach a woven fabric technique.

Help Needed!

We will be celebrating Cinco de Mayo at our May Guild Meeting (instead of a tea party). And Elaine Fergen is coordinating this. She has some people signed up to bring refreshments, but needs a few more. The food will be Mexican. Also, she needs some help with decorations, both in items to be used and in setting things up. If you can help with any of these items. Please contact her at wyldqltr@mtaonline.net or call her at 746-6949

Just a Reminder to those signed up to bring food.

Bev Warble, Luci Smeenk, Peggy Kuschee, Joyce Fish,
Carol Smith and Patty Livingston.

The **Block of the Month** for March is Geometry(81/2" unfinished block) using Jewel Tone Colors.

For the **Fat Quarter** exchange you need to bring Batiks. May bring up to three Fat Quarters.

If any Guild member knows of someone who has lost their home and belongings in a fire or natural disaster, please let Judy Foster (746-0991) or Meg Hills (745-7300) know so we can donate quilts to the family.

Service Committee Needs (we sincerely appreciate all your donations):

1. Any size clear plastic bags with zippers (like blankets come in) or Zip-Loc type bags two gallons or larger for putting projects in.
2. Large pieces of batting
3. Sew- on Velcro (1\2" and wider) for walker

Pickles by Brian Crane

Quilt Size	Backing	2 1/2" Binding
Twin(63x87)	5 1/4 yds	3/4 yds
Double(78x87)	5 1/2 yds	3/4 yds
Queen(84x92)	7 1/2 yds	7/8 yds
King(100x92)	8 yds	1 yd



PAID ADVERTISEMENT

Lendrum Single Treadle Spinning Wheel with accessories \$750.00 373-4024

2010 Board Members/Chairpersons

President	Mary Thompson	376-0202
Vice President	Joyce Fish	745-6417
Secretary	Kathy Buirge	745-6567
Treasurer	Diana Fraley	745-2500
Parliamentarian	Jennifer Jehn	232-2931
Historian	Roseann Chalker	376-1305
Librarian	Shirley Twitchell	746-1480

DMV	Lisa Humphrey	376-7987
Education	Ann Buzby	745-4052
Fair Booth	Sharon Horwath	376-5118
	Denise Slauson	373-0360
Hospitality		
Member Liaison	Glenda Cross	746-2626
Newsletter	Tami Quier	745-7781
	JoAnna Stokinger	354-5265
Gaming	Lynn Gronlund	373-6787
Raffle	Elaine Fergen	746-6949
Retreat	Vickie Mitchell	244-7345
Quilt Camp	Sharon Berna	745-6212
Colony Days	Lynn Gronlund	373-6787
Secret Pals	Carol Smith	746-1468
Service Quilts	Meg Hills	745-7300
	Judy Foster	746-0991

Fat Quarter Facts

One Fat Quarter Equals

- 99 - 2" squares
- 56 - 2 1/2" squares
- 42 - 3" squares
- 30 - 3 1/2" squares
- 20 - 4" squares
- 16 - 4 1/2 " squares
- 12 - 5" squares
- 9 - 6" squares
- 6 - 6 1/2" squares

March Birthday Celebrations

Donna George	5th
Colette Grower	13th
Nelda Hotchkiss	19th
Deanna Eaker	22nd
Sheri Watson	22nd
Sheilah Crum	26th
Linda Ronco	26th
Lorna Kramer	29th



Happy Birthday!

Mailing address:

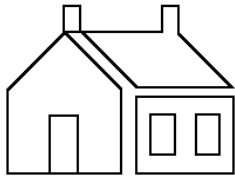
Valley Quilters Guild
 POB 2582
 Palmer, AK 99645

Website: www.valleyquiltersguild.org or
www.valleyquiltersguild.com

Email: valleyquiltersguild.com@hotmail.com
Information for newsletter - tquier@msn.com

Valley Quilters Guild, Inc.
PO Box 2582
Palmer, AK 99645

NONPROFIT ORG.
U.S. POSTAGE PAID
WASILLA, AK
PERMIT NO . 006



Program: Food Drive & Trunk show by Heather Griffin

Items to bring to March 4, 2010 meeting at the Palmer Depot

Non-perishable food for Food Drive

Block of the Month: Geometry– 8 1/2 unfinished block, Colors are Jewel Tones. Pattern can be found on quilterscache.com / web site, or contact the Education Committee (you may enter 2, but you must use different fabrics.)

Fat Quarters: Batiks

(You may enter up to three pieces of fabric which measure 18"x 22")

A few quarters for the goody basket raffle.

(Remember Cash only!)



If your newsletter has a red dot on it, then it is time to pay your dues!